

Bytes

1 How to attach files	2
-----------------------------	---


How to attach files



Click on  or 

Title:


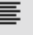
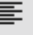
Logged in as [ggeu](#)



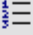
Message:






 Attachments





B *I* U









Submit Reply

Preview Post

Miscellaneous Options

☒ Automatically parse links in text
☐ Disable smilies in text

Attach Files

Valid file extensions: bmp doc gif jpe jpeg jpg pdf png psd txt zip

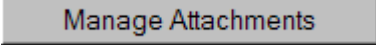
Manage Attachments

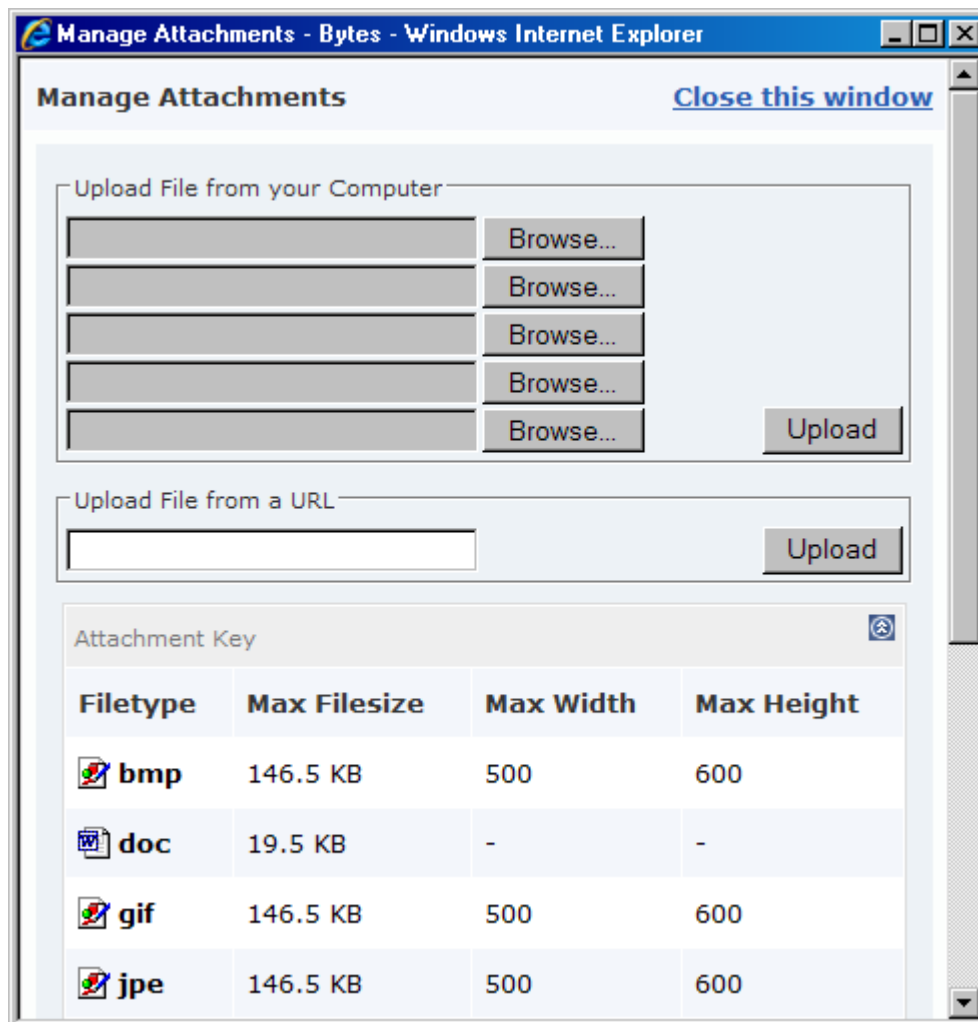
Thread Subscription

Notification Type:

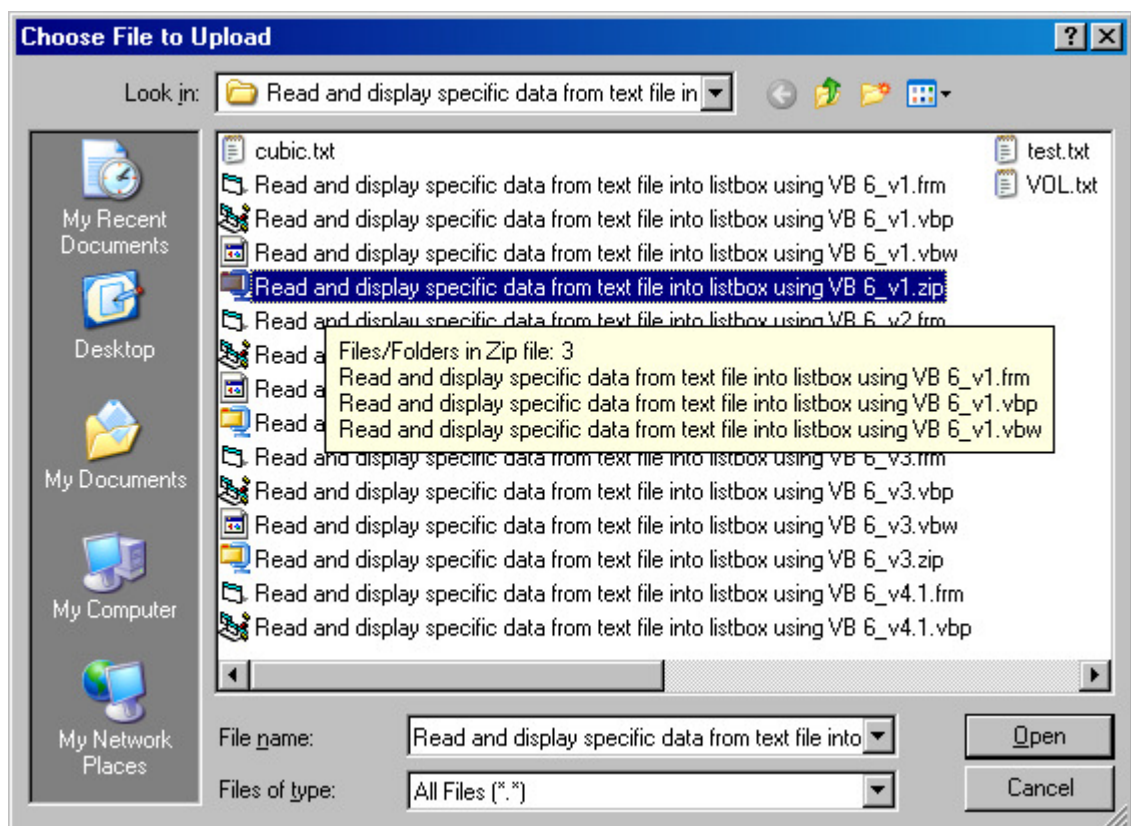
Instant email notification

Rate Thread

Click on 



Click on



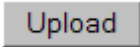
Select the file(s).

Click on 

Remark :

BYTES let You only attach files of a serpen type and volume ! (see list in the window)

If You want to attach other types of files, compress them in a ZIP file.

Click 

Remark :

If it's the wrong file, click 

When all the files are Uploaded, click

[Close this window](#)

Enter Your message and click

